



BOY SCOUTS OF AMERICA



VDS FRIENDS OF SCOUTING

*Invest in youth today...
for a better tomorrow!*

FOR SCOUTING FAMILIES



About Your Council

The San Gabriel Valley Council provides support for:

- Serving over **25,550 youth**
 - Graduating **291 Eagle Scouts (Record)**
 - Cities Served **32**
 - Volunteer leaders **4,874**
-
- Over 157,200 hours of community service.
 - Includes 748 Packs, Troops and Crews
 - Maintains 3 outstanding Scout Camps



Your Council Provides.....

- **Camping Facilities and Maintenance**
- **District/Council Activities and Events**
- **Program Literature**
- **Recruitment Materials**
- **Service Center Support**
- **Training**
- **Help for Scouters and Unit Leaders**
- **Insurance and Liability Coverage**
- **A Council Service Center.**
- **Training aids, visual aid equipment, and literature for use in training**



Services Your Council Provides

- A trained professional staff provides guidance and support to our Units and helps organize Scouting units, train leaders and develop programs.
- Office personnel who maintain records, handle registrations and help leaders receive materials and awards.
- Recognition – various awards for youth and leader achievement.
- Council publications: *The Activity Guide* and an on-line council newsletter.
- Roundtables, training courses, seminars, conferences, commissioner's



You Should Know That:

The San Gabriel Valley Council...

- Receives no federal funding.
- Receives no National BSA funding.
- Receives no United Way Funding.
- Raises 100% of its dollars locally.
- Uses all of the dollars raised to support youth in our community.

All membership and Boy's Life fees go directly to the National Scout Office.



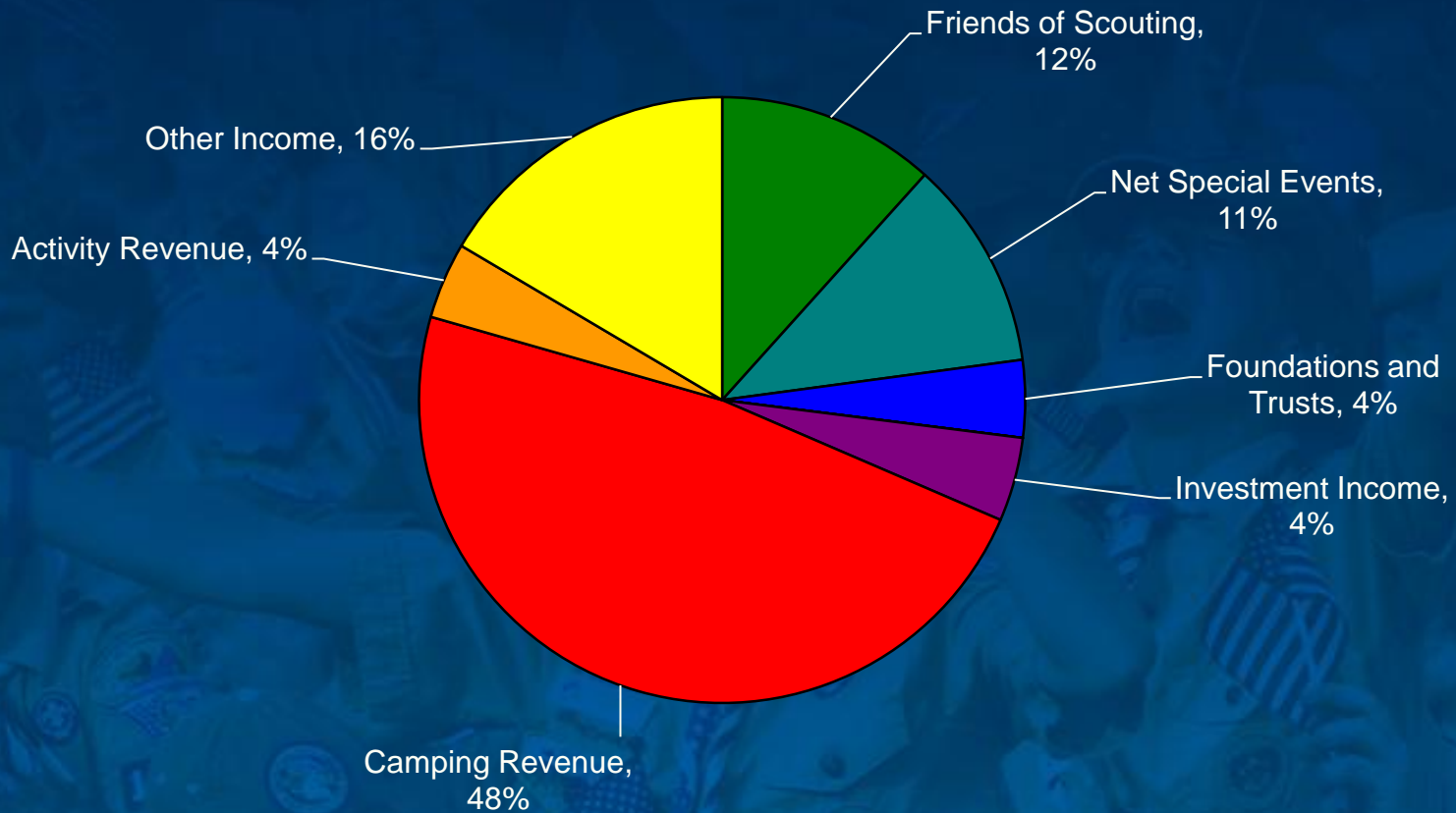
Budget

The entire budget needs to be raised each year by the council.

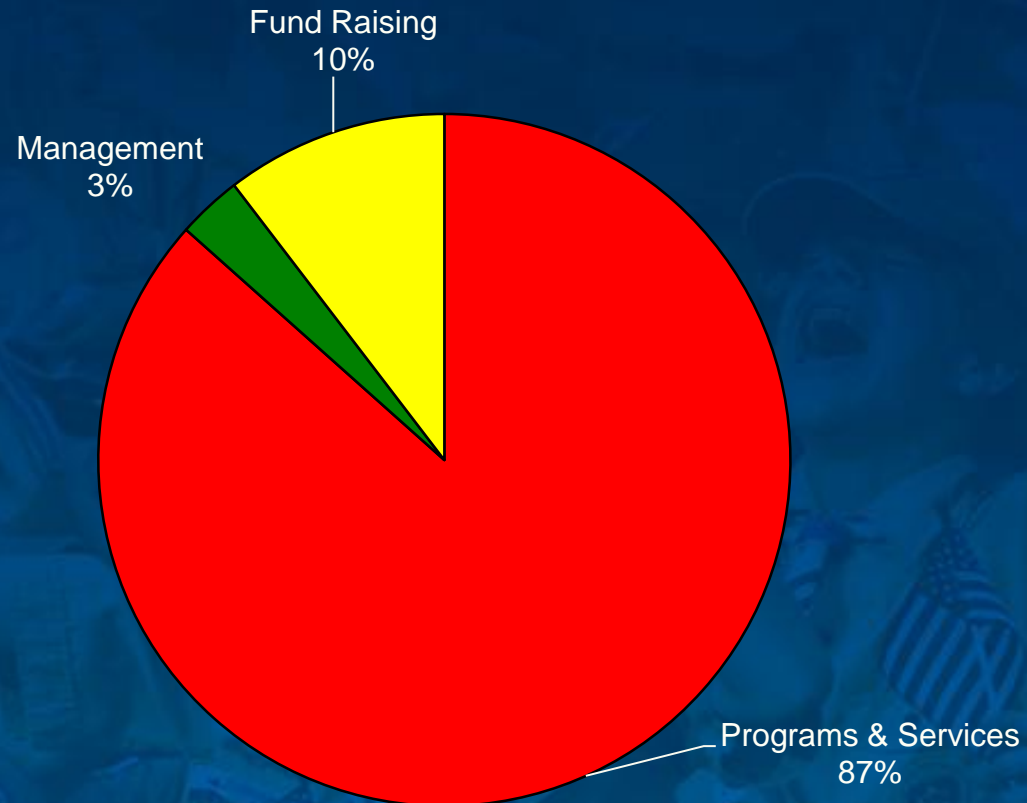
- Income \$ 4,750,112
- Expense \$ 4,658,189
- Net \$ 76,099



Income Sources



Expenses



What Can you do as a Scouting Family?

We CAN'T all lead troops and packs on outings, activities and during our weekly meetings

– We are thankful to those that can

We CAN all make a difference by supporting our kids and the Scouting program

Make an investment in your child's development



What Can You Do?

- Cost of supporting one boy in Scouting is greater than \$250.00 per year.
- We're asking for \$250.00 per boy (and more if you can afford it)

- \$100 – Shoulder Patch
- \$250 – Silver Patch
- \$500 – Gold Patch
- \$1,000 – Framed Patches



How do you measure the return on your investment in the program of the Boy Scouts of America?

- Those among Scouting's Alumni include...
- ◆ 26 of the first 29 Astronauts
- ◆ 63% of Air Force Academy Graduates
- ◆ 68% of West Point Graduates
- ◆ 70% of Annapolis Graduates
- ◆ 72% of Rhodes Scholars
- ◆ 85% of FBI Agents
- ◆ 85% of student council presidents
- ◆ 89% of senior class presidents
- ◆ 88% of school newspaper editors
- ◆ 80% of football captains
- ◆ 77% of school annual editors
- ◆ 65% of basketball captains




What Should I Give?

- **An hour or two per month is all we ask.....**

\$/Hour	Year	1 hour/Month	2 hours/Month
5	X12	\$60	\$120
10	X12	\$120	\$240
15	X12	\$180	\$360
20	X12	\$240	\$480
25	X12	\$300	\$600
30	X12	\$360	\$720
35	X12	\$420	\$840
40	X12	\$480	\$960
45	X12	\$540	\$1,080
50	X12	\$600	\$1,200




Pledging



Valle del Sol District, San Gabriel Valley Council

2010 Friends of Scouting



\$100 Council Patch
(Black Border)

\$250 Council Patch
(Silver Border)

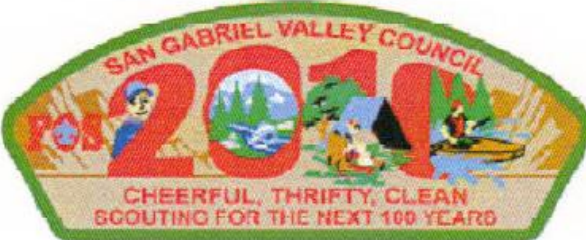
\$500 Council Patch
(Gold Border)

\$1000 All Three Framed

Other \$ _____

Bill Monthly Payments
Starting _____

Bill Quarterly Payments
(Mar-Jun-Sep-Nov)



I would like to charge this to my:

VISA MC AMX Discover

Card Number _____

Exp. Date _____

Signature _____

Credit Cards will only be charged one time for the full amount.

Name _____

Company _____

Address _____

City/State/Zip _____

Home Phone _____

Alternate Phone _____

Email _____

Pack Troop Team Crew # _____

Scouter Family Vendor Community LDS

You can spread your pledge over the year with the convenient pledge card. If you prefer, your pledge can be paid in monthly, quarterly or semi-annual installment.



Your donation

- **Make checks payable to SGVC-BSA**
- **VISA and MasterCard accepted**
- **<https://www.doubleknot.com/registration/campaigndetail.asp?ActivityKey=823722>**
- **Friends of Scouting - Matching Gift**

YOU DONATION IS TAX DEDUCTIBLE!!





Questions?



Thank You!!!

- 2010 FOS Chair Mike Peralez

THANKS for all you do for Scouting!

San Gabriel Valley Council

Ph: 626-351-8815 x224

www.sgvcbsa.org

www.vdsscouts.org

